

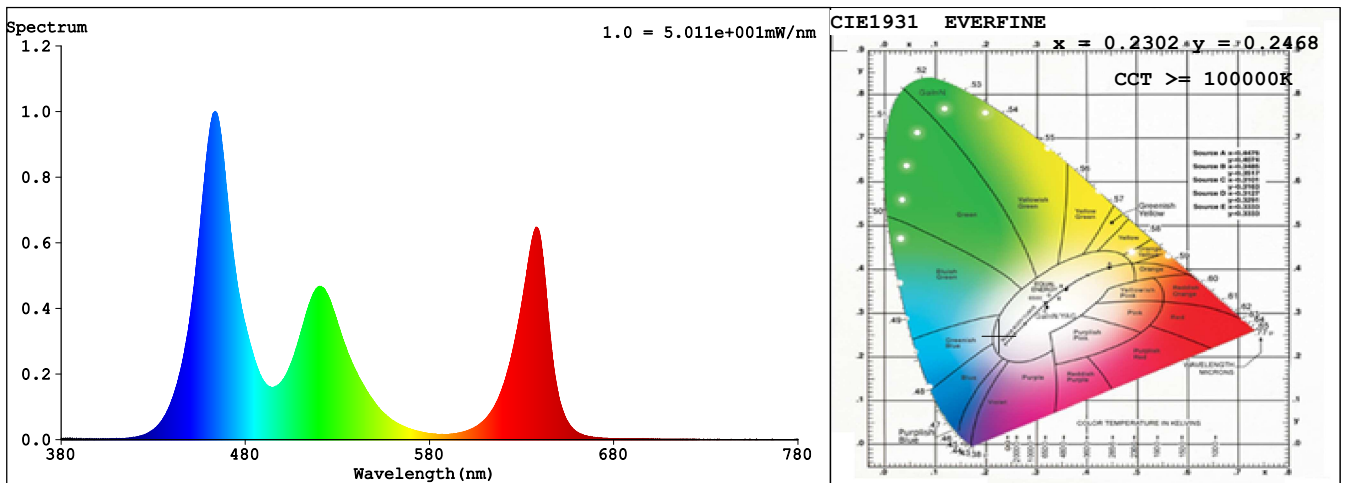
Spectrum Test Report

Sample	:	Date	: 2021-04-13 11:15:58
Specification	: 4040-RGB-120D-24V-RGB	Standardtus	:
Sample No.	: 4	Instrument	: HaasSuite(EVERFINE)
Manufacturer	:	Test by	: IVAN
Assessor	:		
Remark	:		

Test Condition

Temperature	: 25.3Deg	RH	: 65.0%
WL Range	: 380nm-780nm	IP	: 50412 (77%)
Test Mode	: Fast Test	T	: 76 ms
Sensitivity	: High		

Spectrum



Spectral Distribution

CIE1931 Chromaticity Diagram

Colorimetric Parameters

Chromaticity Coordinate: $x = 0.2302$ $y = 0.2468$ / $u' = 0.1674$ $v' = 0.4038$ ($duv=1.37e-02$)

CCT \geq 100000K Prcp WL: Ld=479.8nm Purity=42.8%

Peak WL: Lp=464nm FWHM: =22.2nm Ratio:R=18.0% G=68.6% B=13.4%

Render Index: Ra = 58.0 AvgR = 51.2 TM30:Rf=48 Rg=110

R1 =49 R2 =68 R3 =76 R4 =68 R5 =68 R6 =70 R7 =60

R8 =6 R9 =0 R10=26 R11=60 R12=65 R13=48 R14=83 R15=23

LEVEL:OUT WHITE:OUT

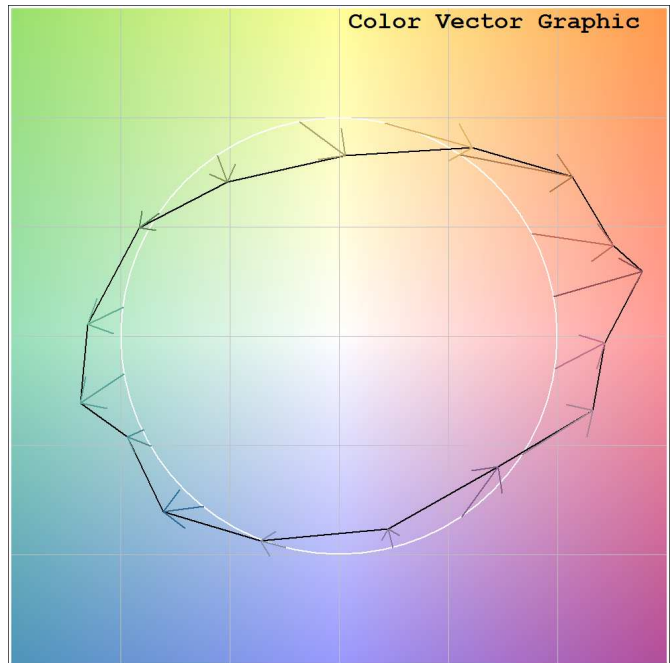
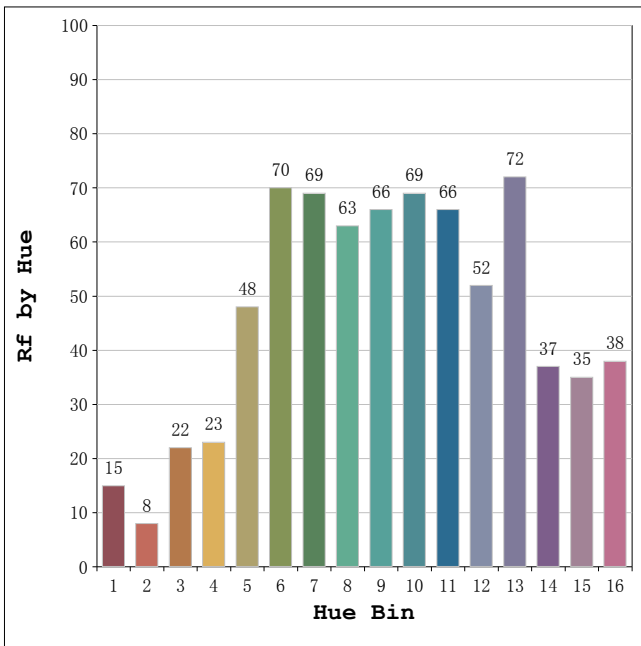
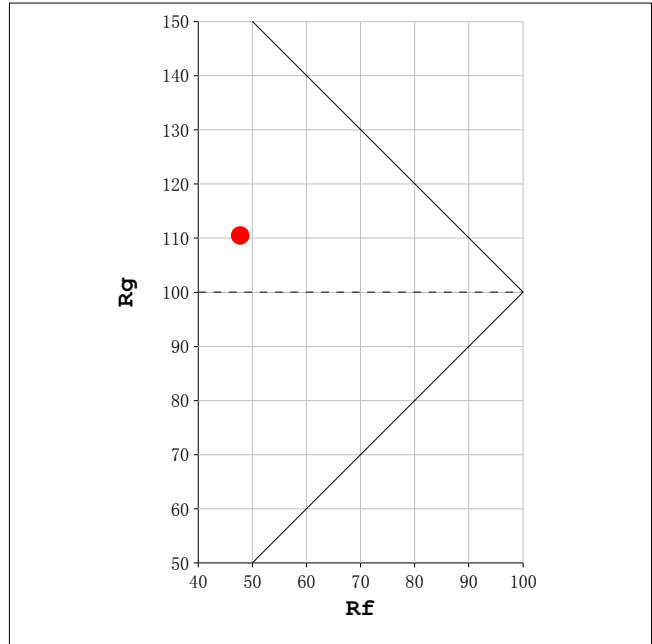
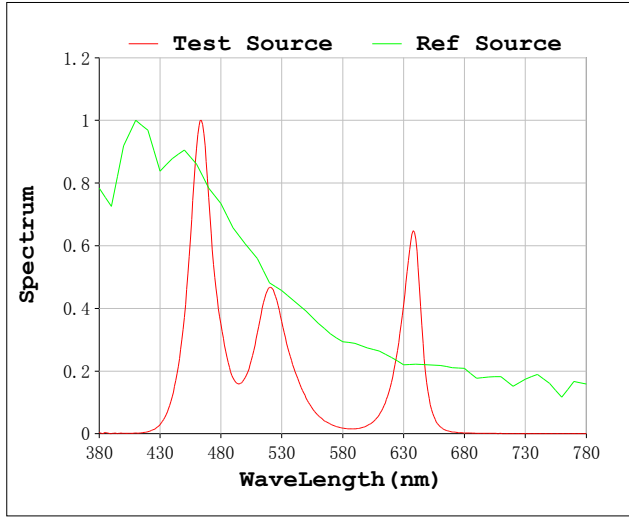
Photometric & Radiometric Parameters

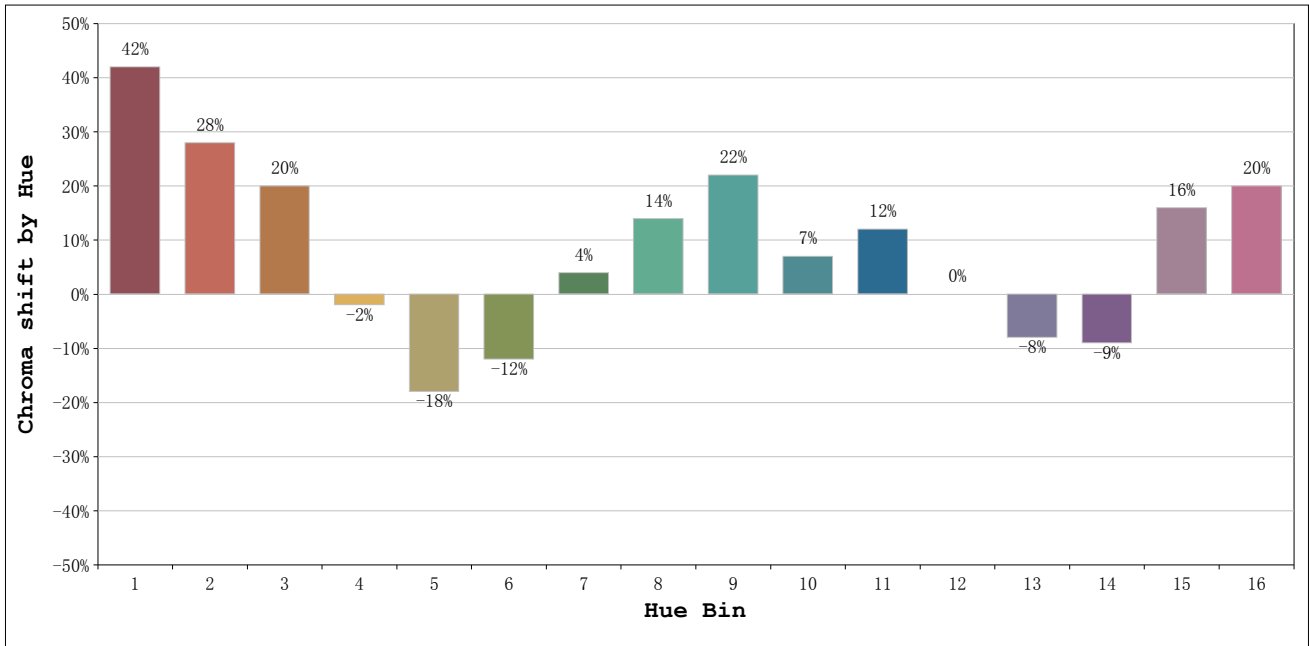
Flux = 633.30 lm Eff. : 39.45 lm/W Fe = 2.9696 W

Electrical parameters

V = 24.00 V I = 0.6690 A P = 16.05 W PF = 1.000 F=0.00 Hz

Rf: 48 CCT: 100000 K u': 0.1674
 Rg: 110 Duv: 0.0137 v': 0.4038





Hue Bin	Hue Angle	Rf	Graphic shift(%)	
			Chroma	Hue
1	0.0° - 22.5°	15	42	3
2	22.5° - 45.0°	8	28	-24
3	45.0° - 67.5°	22	20	-47
4	67.5° - 90.0°	23	-2	-40
5	90.0° - 112.5°	48	-18	-17
6	112.5° - 135.0°	70	-12	3
7	135.0° - 157.5°	69	4	11
8	157.5° - 180.0°	63	14	11
9	180.0° - 202.5°	66	22	9
10	202.5° - 225.0°	69	7	-8
11	225.0° - 247.5°	66	12	-13
12	247.5° - 270.0°	52	0	-11
13	270.0° - 292.5°	72	-8	0
14	292.5° - 315.0°	37	-9	27
15	315.0° - 337.5°	35	16	35
16	337.5° - 360.0°	38	20	16